

# COMMAND CENTER, RESCUE, HAZMAT, PATIENT TRANSPORT

WHATEVER YOU CALL IT, ROSENBAUER CAN BUILD  
THE APPARATUS **THAT FITS YOUR NEEDS.**



Because your emergencies are not typical, Rosenbauer custom builds each of its apparatus to include all the features you need to get the job done safely and effectively.

- ❖ **Rescue Style Compartments**
- ❖ **Custom Command Areas**
- ❖ **Comprehensive Communication Systems**
- ❖ **Mobile Internet Capabilities**
- ❖ **Wide Range of External Camera Options**
- ❖ **SCBA Fill Stations**
- ❖ **Breathing Air Compressors**



## INDUSTRIAL RESCUE VEHICLE

Rosenbauer Industrial Apparatus are designed to meet each customer's needs. Some available features include:



DISCOVER INNOVATION. EXPERIENCE TECHNOLOGY.

ROSENBAUERAMERICA.COM

INFO@ROSENBAUERAMERICA.COM

f ROSENBAUER GROUP

@ROSYFIRE

ROSENBAUERFIRE

**Rosenbauer South Dakota, LLC**  
100 Third Street; Lyons, SD 57041  
605.543.5591

**Rosenbauer Minnesota, LLC**  
5181 260th Street; Wyoming, MN 55092  
651.462.1000

**Rosenbauer motors, LLC**  
5190 260th Street; Wyoming, MN 55092  
651.462.1000

**Rosenbauer Aerials, LLC**  
870 S Broad Street; Fremont, NE 68025  
402.721.7622



SOUTH DAKOTA, LLC. #011714-RSD | MINNESOTA, LLC. #011714-RMN

INDUSTRIAL



# INDUSTRIAL

## EMERGENCY VEHICLES

WWW.ROSENBAUERAMERICA.COM



## AERIAL DEVICES

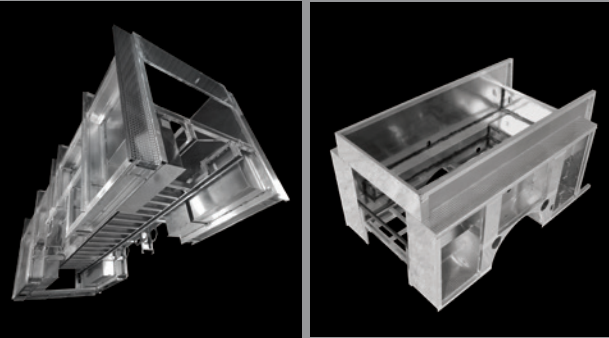
Whether you need an elevated waterway, articulating platform or a straight aerial, Rosenbauer can meet your unique and demanding needs with our full line of aerial apparatus, capable of flowing up to 3000 GPM from our wide variety of aerial devices.

- ✦ **Aerial Ladders up to 125’**
- ✦ **Aerial Platforms up to 104’**
- ✦ **Elevated Waterways up to 68’**
- ✦ **Articulating Aerial Platforms up to 115’**

## APPARATUS BODY

Because your industrial design needs are unique and demanding, Rosenbauer offers the strongest, most diverse selection of body design in the industry. From our heavy-duty extruded aluminum body, to our formed aluminum and stainless steel bodies, each body is customized to your specifications to meet your needs.

With our bodies being designed specifically for your application, we can assure that the pump, plumbing, and related systems are designed with maximum efficiency and performance in mind.



## ARFF VEHICLES

Do you protect an airfield? Do you have severe off-road areas that you need to reach? Rosenbauer offers a full line of ARFF vehicles that are able to traverse even the most treacherous of terrain. Rosenbauer’s 4X4, 6X6, and 6X6 HRET vehicles will meet even the most difficult challenges.



# ROSENBAUER - INDUSTRIAL EMERGENCY VEHICLES

## CUSTOM OR COMMERCIAL CHASSIS, YOU DECIDE

Due to the unique requirements of industrial emergency responses, Rosenbauer offers a full line of custom and commercial chassis that meet the most stringent safety standards. This allows us to work within the operational and budget requirements of even the most complex apparatus purchases.

## INDUSTRIAL WATERWAY AND PUMP SPECS

**51-ft Industrial Waterway Device**  
**2500 GPM Water Pump**  
**250 GPM Foam Pump**

SYSTEM		1%	3%	6%
Foam Pro Accumax 3300	GPM	30,000	10,000	5,000
Rosenbauer	GPM	30,000	10,000	5,000
Williams	GPM	30,000	10,000	5,000



## DRY CHEMICAL SYSTEMS

Does your application require a dry chemical extinguishing system? Let us help you select the proper system, ranging from a 250-lb to 2000-lb system. Whatever your needs, we have a solution to fit your requirements.



## OPERATIONS PANEL

Top mount, side mount, rear mount or safe scene style operations panels – you choose and we deliver. Rosenbauer will engineer an easy-to-understand operations panel for even the most complex industrial systems designed.

## FOAM SYSTEMS

Rosenbauer will design, engineer, and install the foam system that you require, rather than requiring you to use a proprietary foam system on your industrial apparatus.



## STORAGE

Our bodies are custom designed to meet your requirements, and storage provisions are designed to maximize available space in all compartments. By designing each compartment individually, you can be sure you will have ample storage for your department’s equipment.