



TRUSTED PERFORMANCE



MARCO
Equipment Sales, LLC



PROFESSIONAL GRADE

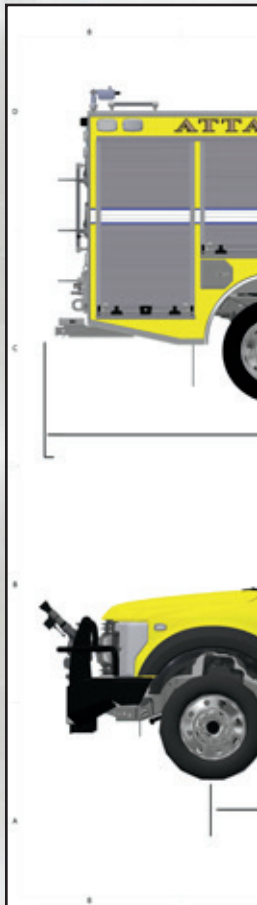


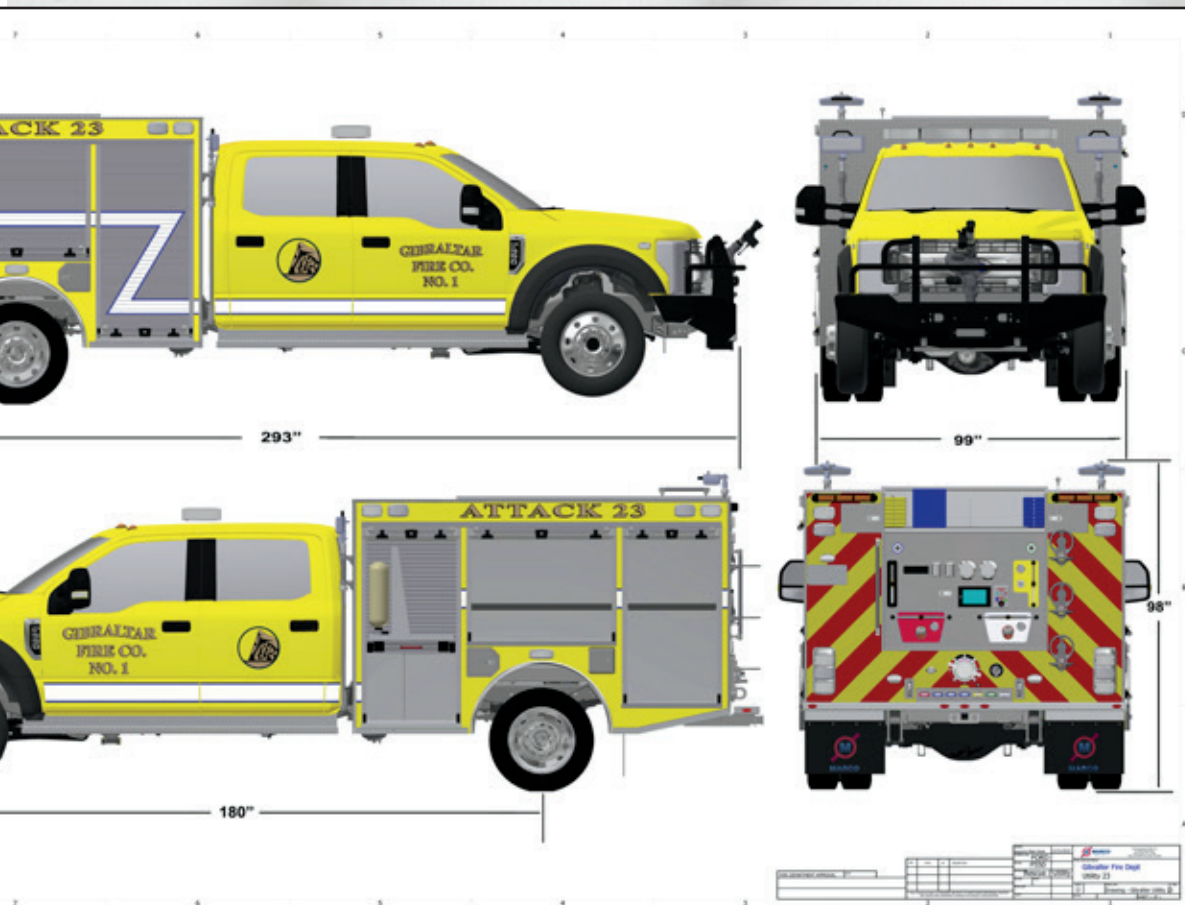
ABOUT US

Welcome to Marco Equipment Sales LLC. Marco is a manufacturer of top-grade emergency vehicles. We provide all aspects of apparatus manufacturing including design, fabricating, painting, assembly, graphics and equipment mounting in our Honey Brook PA facility. We provide a wide variety of units from the standard to the unusual so contact us or one of our dealers to see what Marco can build for you.

Page:

- 4 Attack Trucks
- 8 Brush Trucks
- 12 Rescue Trucks
- 14 Specialty
- 16 Tool Mounting
- 17 DirectDrive Plus
- 18 Paint & Graphics
- 19 Refurbishing





The Marco Three-Dimensional Computer Aided Design (3D CAD) system offers nearly unlimited customization and a highly efficient design that maximizes space and serviceability. The entire apparatus including chassis, apparatus body, plumbing, electrical wiring, lights, etc is assembled virtually in a 3D model before construction is begun.

Marco apparatus are constructed using an innovative “tab and slot” system where the tab in one panel is inserted into a slot in the adjacent panel. This insures that the panels are assembled exactly as designed without the need for jigs.



ATTACK TRUCKS

Marco “**Attack**” apparatus feature conventional aluminum fire bodies with an extruded aluminum subframe. These units maximize compartment space and can be fully customized to meet your unique requirements. These trucks can get you and a full complement of equipment to the scene in style.

Features Include:

- Pump & Roll capabilities with our DirectDrive PLUS system. (see page 17)
- Up to 500 gpm, PTO
- Up to 1250 gpm, Midship
- Stainless steel plumbing
- Poly water tanks up to 400 gallons
- Full hosebed with adjustable dividers
- Transverse L1/R1 front compartment
- Choice of swing or roll-up doors
- Body-integral fender panels and wheel liners
- Custom fabricated console
- Weldon multiplex electrical systems
- NFPA 1906 or NFPA 1901 compliance
- Non-prorated 7-year paint warranty

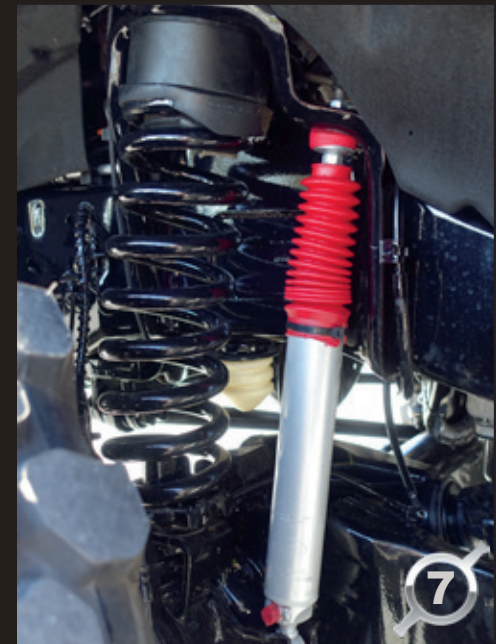




ATTACK TRUCKS

Continued...





BRUSH TRUCKS

Marco “**Flatbed**” apparatus are built of independent components attached to a flatbed base. These units are rugged and provide excellent ground clearance and lower total weight for off-road applications. These trucks can get you and equipment off the beaten path with safety and efficiency.

Features include:

- Pump & Roll capabilities with our DirectDrive PLUS system. (see page 17)
- Up to 500 gpm @ 150 psi PTO pump ratings
- Stainless steel plumbing with rear pump panel
- Full hosebed with adjustable dividers
- Poly water tanks up to 500 gallons
- All aluminum body construction
- Transverse L1/R1 front compartment
- Choice of swing or roll-up doors
- Custom fabricated console
- Weldon multiplex electrical systems
- NFPA 1906 compliance

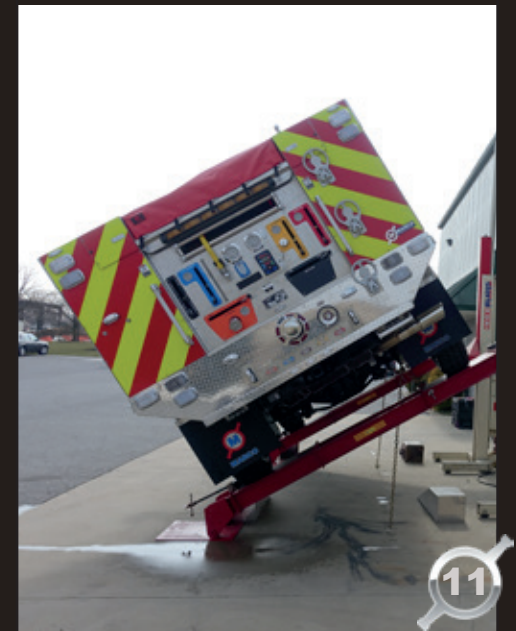




BRUSH TRUCKS

Continued...





RESCUE TRUCKS

Marco “**Rescue**” apparatus feature a choice of aluminum or stainless steel fire bodies with an extruded subframe. These units maximize compartment space with low floor heights and emphasis on storage solutions that are ergonomic and efficient. These trucks can get you and the equipment to the scene safely and securely.

Features include:

- Choice of aluminum or stainless steel body construction
- Body-integral fender panels and wheel liners
- Transverse L1/R1 front compartment
- Choice of swing or roll-up doors
- Choice of circle burnished or Multispec interior finish
- Custom fabricated control console
- Weldon multiplex electrical systems
- NFPA 1901 compliance
- Full non-prorated 15-year paint warranty on stainless steel construction
- Full non-prorated 7-year paint warranty on aluminum construction





SPECIALTY

Marco offers a highly customized upfit service for specialty applications from simple squad/traffic vehicles to command centers and Jeeps. Our design team and technicians will assemble a unit that meets the requirement your department has.

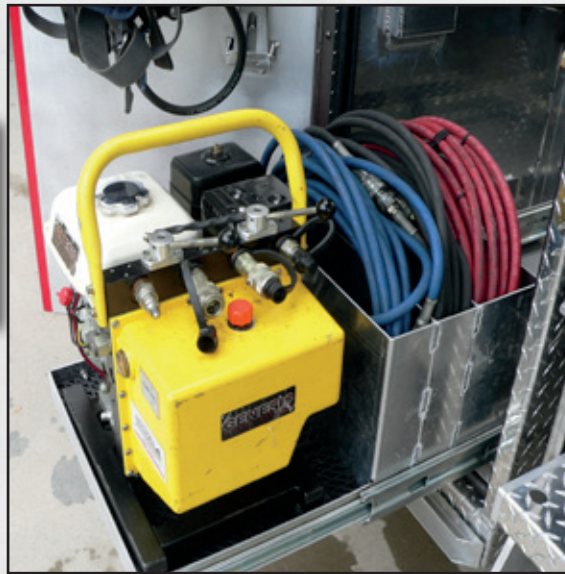
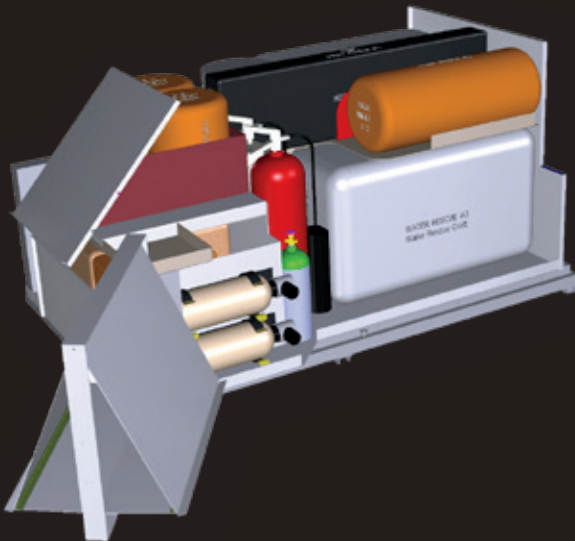




TOOL MOUNTING

Everything is in its place, secured and ready to go when you are. Our techs are experts in designing and fabricating brackets to keep your equipment accessible. The same 3D CAD models used to build the body are used to lay out “virtual” equipment in the compartment and to design the custom brackets needed.

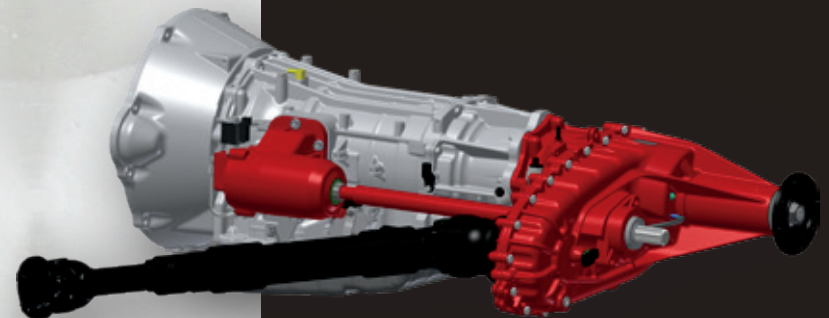
Marco also stocks a wide selection of hooks, straps, clamps and specialized mounts for securing loose equipment.



DIRECTDRIVE
PLUS
PATENT PENDING

LIVEDRIVE
4x4 PLUS
PATENT PENDING

RAMDRIVE
PLUS
PATENT PENDING



DIRECTDRIVE

As the developer of the patented DirectDrive PLUS PTO concept, Marco's driveline expertise ensures that our apparatus run smoothly, quietly and cost effectively. The DirectDrive PLUS system will operate fire pumps up to 500 GPM @ 150 PSI and generators up to 25 KW. The PTO system is quieter and takes up significantly less space and weight than conventional engine-driven pumps or generators. The PTO system eliminates the issues associated with operating a second engine and maintaining its fuel storage. PTO fire pumps engage smoothly with the flip of a switch and can be controlled with conventional electronic pressure governors.

PAINT & GRAPHICS

Marco has its own full-service preparation and paint facility. Marco uses PPG branded paint and follows the strict preparation and application protocols specified by PPG. By following this stringent protocol, PPG will warrant the paint against corrosion, discoloration, or loss of gloss for a period of seven years, without being prorated. From the initial sanding to the final polishing, no detail is overlooked in providing a beautiful finish.

Marco's graphics department is equipped to design and install striping, lettering, and custom graphics to match your department's fleet. We stock a wide color variety of 3M vinyl in Schotchlite reflective and Schotchcal nonreflective. We also stock a variety of genuine gold-leaf products.





REFURBISHING

Marco opened its doors in 2004 by repairing and refurbishing fire apparatus. From scratch and dent repair to complete body-off frame refurbishments, we will help you keep your apparatus in top condition. We have authorization from large chassis and apparatus manufacturers to perform collision and warranty repairs on their apparatus. Our paint facility is experienced at corrosion and rust repairs with a focus on long term resolution.



"Thank you for everything you and your team did for us on this project. Everything came out better than we could ask for."

**Paul Barnes- Fire Police Captain
Rescue Hose Co**

"The truck turned out beautiful and we can tell that it was done by a company who really cares about customer service and the finished product. The attention to detail and quality shows!"

**Vito Jacono Jr- Chief Engineer
Concordville Fire Co**

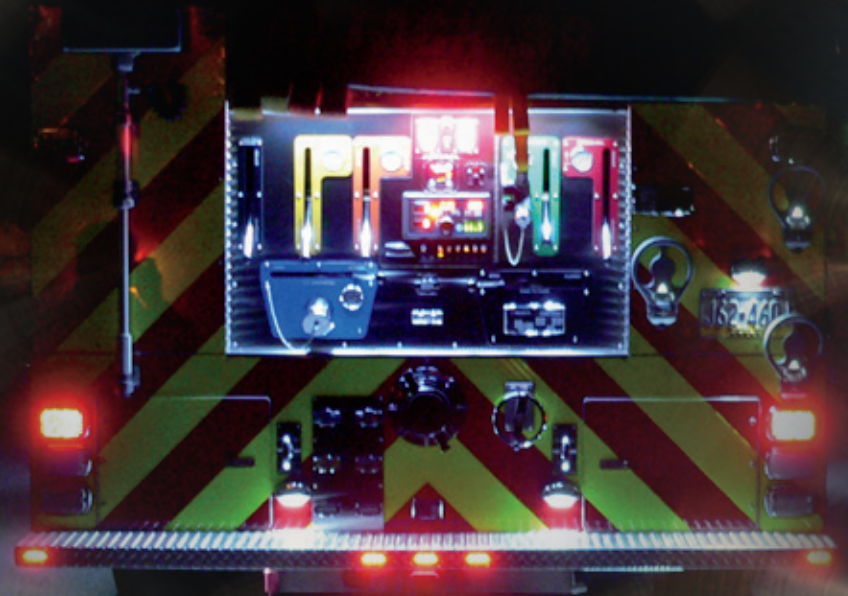
"The new truck is operating well and everyone is pleased. It's a real show stopper when we take it to other departments."

**Bob Metzger- Captain
Canaan Valley Fire Department**

"I would like to say again "Thank You" for the fantastic job you did on our truck. We are very pleased and impressed with the quality workmanship you put into the vehicle!!"

**Chuck Snyder
Straustown Fire Co.**

Thank you for joining us on this short tour of Marco Equipment. We appreciate all our customers and hope that if you are new to our company, you will contact us or your Marco dealer for more information.



MARCO
Equipment Sales, LLC

137 Westbrook Drive • Honey Brook, PA 19344
610.237.9937 • sales@marcoequip.net