



Leaders in safety & quality

since 1968

# Ahead of the curve

At Horton, we are proud to build the highest quality and most innovative emergency vehicles in the industry. Since 1968, we've been driven by a passion for exceeding our customers' expectations and delivering the best in ambulance technology, features, and performance.



But quality means much more than a well-built ambulance. For Horton, quality translates into the industry's lowest total cost of ownership. Factoring in purchase price, maintenance costs, operating costs, uptime, life expectancy and resale value, Horton provides a competitive, if not better lifetime cost alternative to industry competitors.

Whatever model you choose, we promise

**Type III**  
Van cut-away chassis providing the comfort of a car-like ride and tight turning radius



1968



- First van ambulance  
– Pioneered the move from hearse-based transport to EMS

1971

- Raised roof van  
(all steel)

1973



- First all-aluminum modular ambulance – Type I and Type III give the new profession of EMT the room to work
- First modular cabinetry
- First edge formed doors
- First all-welded body
- First exterior-mounted oxygen cylinder – separating dangerous high pressure O<sub>2</sub> from patients and care providers

1974



- First HYGIE sled test  
– The first in a series, testing enables Horton to analyze cabinet retention, chassis/body mounting systems and O<sub>2</sub> cylinder retention
- Electric Oxygen Control
- First Critical Care Vehicle

1975

- First CPR seat configuration with center mounted cot

1976

- First combination rescue/ambulance vehicle

1981

- Sled Test

1983

- All-aluminum cabinetry

1984

- First Medium Duty Ambulance

# Custom built to fit any need

As the leading manufacturer of custom-built ambulances, Horton has committed itself to building the world's safest ambulance, verified by extensive third party testing. Supported by a network of elite dealers, Horton continues to dedicate itself to the highest standards of quality and customer satisfaction.

## We manufacture the following vehicles to fit the needs of fire and emergency professionals:

promise - you won't be disappointed in a Horton.

### Type I

Truck chassis applicable for both large city fleets and small rural areas



1990

- System 2000.  
First programmable solid state electrical system

1999

- Sled Test

2000

- Sled Test

2001

- Silhouette  
Safety Lighting

2002

- Intelliplex Multiplexed  
solid state electronics system



2004

- Sled Test
- Crash resistant step
- Anti-microbial grab rails and panels
- Quiet metal floors



### Medium Duty

Most powerful chassis providing ultimate durability and payload capacity

### Critical Care Transport (CCT)

Specialized, tailor-made transport vehicle that optimized performance and safety



2007

- VI-Tech Mounting  
System



2009

- The Horton  
Occupant Protection System (HOPS)  
leads rollover safety programs with a systematic approach.



2014

- Intelliplex i4G, Horton's 4th generation multiplex electrical system debuts, leading the industry in innovation with an integrated mobile app.



### Remounts

Cost effective way of replacing a worn chassis to lengthen the life of your vehicle while renewing and improving performance





☰ Contact your dealer or visit [www.hortonambulance.com/findadealer.cfm](http://www.hortonambulance.com/findadealer.cfm) to start a custom build.







## Type III

A popular choice in today's market, these van cutaway chassis offer a variety of headroom options and the ability to modify to suit your needs. And choice is not limited just to the exterior as each model offers numerous compartment and cabinet configurations, from standard designs to fully-customized creations.

**Standard features include:**

- Exclusive Horton Occupant Protection System (HOPS) for rollover crashes
- Extra sound and thermal protection
- Intelliplex i4G system that connects a crew with the ambulance
- VI-Tech mounting system



## Type I

Widely recognized as the "workhorse" of the Fire/EMS world, our Type I ambulance offers all the added benefits of a truck chassis. Applicable for both large city fleets and small rural areas, Type I vehicles provide dependable support and optional rugged four-wheel drive power.

**Standard features include:**

- Exclusive Horton occupant protection system (HOPS) for rollover crashes
- Extra sound and thermal protection
- Intelliplex i4G system that connects a crew with the ambulance
- VI-Tech mounting system

# Medium Duty

Unparalleled in durability and payload capacity, Horton's Medium Duty ambulance provides the best in chassis choice. Crews facing hilly terrain or long treks to the hospital depend on Medium Duty trucks for their superior performance. Customize with a choice of pass-through or walk-through, crash barrier configuration and more.

## Standard features include:

- Exclusive Horton Occupant Protection System (HOPS) for rollover crashes
- Extra sound and thermal protection
- Intelliplex i4G system that connects a crew with the ambulance
- VI-Tech mounting system



# Critical Care Transport (CCT)

Horton provides the premiere, custom design service for those looking to purchase a new CCT or hospital ambulance. Providing specialized transport for critical care patients requires an ambulance that you can depend on

## When designing a CCT vehicle, you will receive:

- Collaborative design session to understand your specialized needs and requests
- Custom-designed interior layout based on the flow of your crew
- Expert engineering and skilled craftsmen dedicated to your assembly
- Optimal functionality and accessibility
- Complete assembly that provides daily function you can count on.







☰ Contact your dealer or visit [www.hortonambulance.com/findadealer.cfm](http://www.hortonambulance.com/findadealer.cfm) to start a custom build.



# REMOUNT

Our remount vehicles are given the same attention and service as a new ambulance going down the line. This means factory-quality attention, ensuring a fantastic remount.

**Remounting an existing vehicle with Horton ensures proper service along with other benefits, including:**

## Warranty

Factory remounts are the only remounts that retain a vehicle's warranty.

## Quality

Remounts go through the same quality inspection process as a new ambulance with thousands of checkpoints.

## Available upgrades

Remounts encompass much more than a new chassis. We can revamp interiors, upgrade electrical systems, apply new paint schemes, and much more.

## State-of-the-Art technology

We have all of the assets to ensure your remounted vehicle is serviced correctly, to factory specs, when remounted.

# HIGHEST SAFETY STANDARDS

We developed a comprehensive safety solution called HOPS (Horton Occupant Protection System), a system of airbags, seatbelts and progressive foam protection that provides the highest standard in occupant protection. This system includes:



## Impact wall

A front cabinet solution that goes beyond netting and an "A" bar. Our full-strength wall is built with the same aluminum as our body walls and cabinets.

## Four-point seat belts

Standard four-point seat belt and safety vest provides simple operation, one-click convenience, maximum safety and mobility, and proper placement.



# WITH OVER 30 YEARS OF TESTING,



# WHEN YOU BUY A HORTON, YOU BUY QUALITY

There are many benefits that differentiate a Horton vehicle from the competition. Horton has invested years to develop ambulances that achieve:



- 1 Highest Safety Standards
- 2 Rigorous Testing
- 3 Superior Vehicle Operation
- 4 Premium Design and Finish

When we engineer a **Horton**, we begin and end with **safety** in mind. It's our commitment to you and your patients.

☰ Contact your dealer or visit [www.hortonambulance.com/findadealer.cfm](http://www.hortonambulance.com/findadealer.cfm) to start a custom build.



## Horton 360

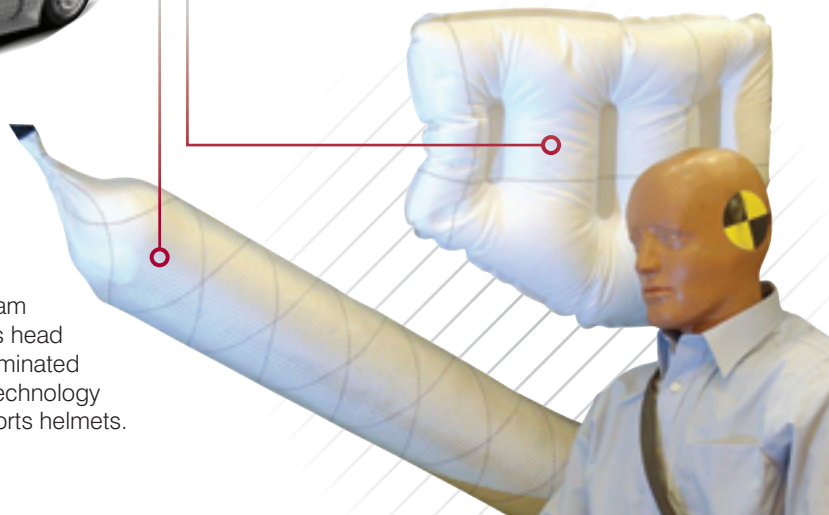
An optional camera system providing a complete 360 degree view of vehicle surroundings to improve maneuvering and avoid disastrous accidents or damage.

## Cushion system

Progressive resistance foam padding, which dissipates head strike energy through a laminated protective surface. This technology is used in high-impact sports helmets.

## Air bags

Two types of airbags activated by a rollover sensor that reduce the risk for fatalities by protecting the attendant from the inhalation area cabinet with an inflatable head curtain.



Horton established a new era of safety - one that greatly exceeds federal requirements. Our solutions minimize occupant risk through a systematic and comprehensive safety approach.

# RIGOROUS TESTING

As the only ambulance manufacturer independently and repeatedly testing since 1974, Horton continues to lead the market. Our extensive testing protocol includes:

## **Static roof test**

Exceeds the standard and the competition with a verified test up to 90,000 pounds of force.

## **Static load test**

A 10-point mounting to test the body floor, which more accurately represents actual mounting to a chassis frame and providing real scenario results, not a modified test environment.

## **HYGE sled testing**

Simulates a vehicle rapidly stopping with the occupant maintaining velocity to provide the most accurate crash test results.

## **Impact testing**

We perform dynamic impact testing, even though current industry standards only call for static load and pull tests.

## **Rollover testing**

We use one of only two dynamic rollover test machines in the US, enabling test engineers to simulate a rollover event while recording significant test data inside the vehicle.

# PREMIUM DESIGN AND FINISH



# SUPERIOR VEHICLE OPERATION

Our ambulances are the most technologically advanced in the industry. We are early adopters of technology because we want our vehicles to perform exceptionally for our customers every time. The features of our in-vehicle technology include:

## **Intelliplex i4G:**

Electrical control system uses an enhanced 7" LCD touch screen with custom programming capabilities that provide complete connectivity to an ambulance.

## **Horton Connect**

A mobile app and command center that controls functions such as emergency, scene, and interior lights, climate control, oxygen system, and module locks. This system saves time to focus on critical tasks and provides 24/7 data via a cloud based storage system.

## **Horton Telematics**

Manages location, movement, and status of an ambulance. Everything from fuel consumption to speed and location can be viewed on a central dashboard.

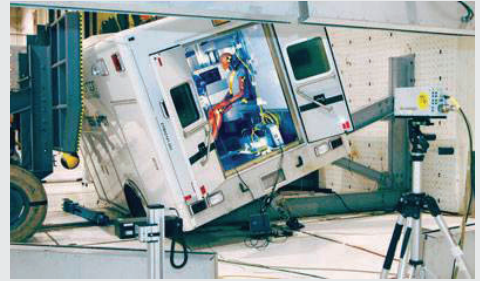
## **Secure WiFi Hotspot**

Compatible with all major carriers such as AT&T, Verizon, and Sprint, this hotspot through Horton Connect allows EMS professionals to connect quickly and securely to exchange or transfer critical data with no interruption of cellular data.

## **Cool-Tech II™**

Boasting a 100,000 BTU cooling condenser capacity, Horton's Cool-Tech II™ can complete a full module cool down in less than nine minutes.





**NOT SATISFIED BY SIMPLY “GETTING BY” ON TESTING, **HORTON EXCEEDS ALL KKK, NFPA AND AMD STANDARDS, SOMETIMES BY AS MUCH AS 400%.****

The interior and exterior of our ambulances are second to none. We understand that not only the look of an ambulance is important but also its functionality. Our design and finish elements include:



### **CG Tech Interior Finish**

High quality aluminum with a clear guard coating provides superior strength and resistance to oils, greases, weak acids, salts, and blood borne pathogens.



### **Carbon Fiber / Kevlar Panels**

High-tech appearance maintains high quality finish and withstands temperatures of -58 degrees F to 230 degrees F.

### **Door Handles and Hardware:**

New free-floating door handle design is large and bold with optional LED lights and outside handle surface chrome finish.



### **Interior Lighting**

Almost unlimited inside lighting options that include a restocking timer controlled by Intelliplex and advanced LED strip lighting for cabinet interiors.

### **Exterior Lighting**

LED marker lights, dual-color LED strip lights, silhouette safety lighting and conspicuity lighting all provide greater visual recognition.



Horton Connect's  
Wi-Fi module



Stored on a secure,  
cloud-based system,  
fleet information is always  
available for review



# INTELLIPLEX *i4G*

